

Bon CHEF

NEXUS SYSTEM • 2023

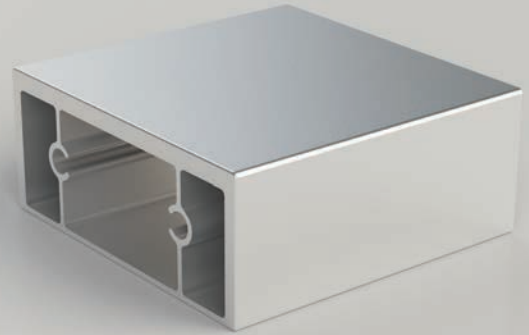




NEXUS TABLE SYSTEM Bon Chef is proud to introduce the all new Nexus Table System. This groundbreaking furniture system is completely customizable. The frames are constructed of lightweight aluminum alloy and are entirely collapsible, allowing for unmatched ease of transport. A completely hidden wiring system and integrated electrical outlets allows for a clean, beautiful look - no messy, tangled wires! Choose your colors and finishes, then build out your tabletop with functional, drop-in tiles.



MOBILE, COLLAPSIBLE FRAME
Frames collapse for easy transport



LIGHTWEIGHT ALUMINUM ALLOY FRAME
One third the weight of stainless steel



INTEGRATED ELECTRICAL OUTLETS
Customer can utilize their own equipment



MODULAR, DROP-IN COMPONENTS
Easily swap a variety of equipment in and out



RETRACTABLE POWER CORDS
Tangle-free systems help maintain a clean space



HIDDEN WIRING SYSTEM
Hide all extra extension cords



1. FRAME FOLDS FLAT



2. FRAME POPS OPEN



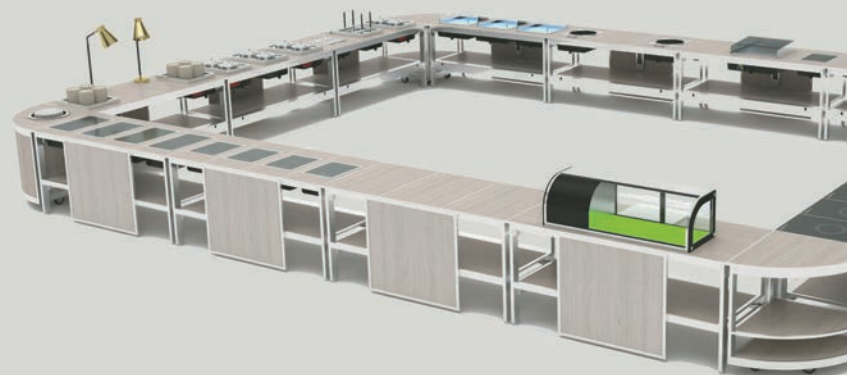
3. ADD MODULAR SHELF



4. ADD MODULAR PANEL



4. ADD SURFACE COMPONENTS



5. BUILD OUT YOUR SYSTEM



customize your look

Choose from multiple finishes to match your current decor: Silver & Oak or Black & Concrete.



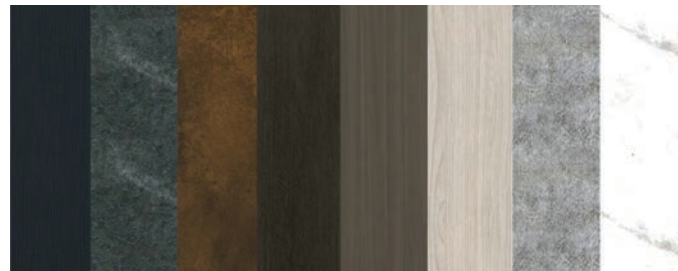
endless combinations

Choose from a variety of drop-in, functional tabletop tiles to create a wide range of setups for different events.



transport carts

We offer a selection of transport carts to ensure the components of the Nexus system can be easily stored and moved to a variety of locations.



special order colors and finishes available

Bronze and Gold frames available by special order, as well as multiple laminate finish options.



COLLAPSIBLE DISPLAY FRAME

69.25" x 30" x 32.75"

NX-1-S

Silver Anodized Frame

NX-1-B

Black Anodized Frame



COUNTERTOP - FULL SIZE

70.75" x 31.5" x 1"

NX-1-CT-S-O

Silver Anodized Frame
with Oak Laminate

NX-1-CT-B-C

Black Anodized Frame
with Concrete Laminate



COUNTERTOP - HALF SIZE

35.5" x 31.5" x 1"

NX-12-CT-S-O

Silver Anodized Frame
with Oak Laminate

NX-12-CT-B-C

Black Anodized Frame
with Concrete Laminate



COUNTERTOP - QUARTER SIZE

17.75" x 31.5" x 1"

NX-14-CT-S-O

Silver Anodized Frame
with Oak Laminate

NX-14-CT-B-C

Black Anodized Frame
with Concrete Laminate



FRONT PANEL - FULL SIZE
70.75" x 1" x 31.5"

NX-1-FP-S-O
Silver Anodized Frame
with Oak Laminate

NX-1-FP-B-C
Black Anodized Frame
with Concrete Laminate



FRONT PANEL - HALF SIZE
35.5" x 1" x 31.5"

NX-12-FP-S-O
Silver Anodized Frame
with Oak Laminate

NX-1-FP-B-C
Black Anodized Frame
with Concrete Laminate



FRONT PANEL - QUARTER SIZE
17.75" x 31.5" x 1"

NX-14-FP-S-O
Silver Anodized Frame
with Oak Laminate

NX-14-FP-B-C
Black Anodized Frame
with Concrete Laminate



SIDE PANEL
30" x 1" x 31.5"

NX-1-SP-S-O
Silver Anodized Frame
with Oak Laminate

NX-1-SP-B-C
Black Anodized Frame
with Concrete Laminate



BOTTOM SHELF PANEL

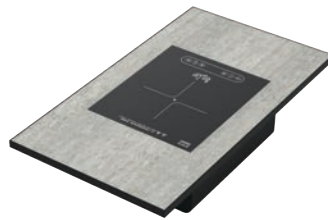
69.25" x 370.75" x 31.5" x 1"

NX-1-BS-S-O

Silver Anodized Frame
with Oak Laminate

NX-1-BS-B-C

Black Anodized Frame
with Concrete Laminate



INDUCTION TOP - QUARTER SIZE

17.75" x 31.5" x 7"

1800W, 120V

NX-14-IC-S-O

Silver Anodized Frame
with Oak Laminate

NX-14-IC-B-C

Black Anodized Frame
with Concrete Laminate



DOUBLE INDUCTION TOP - QUARTER SIZE

17.75" x 31.5" x 7"

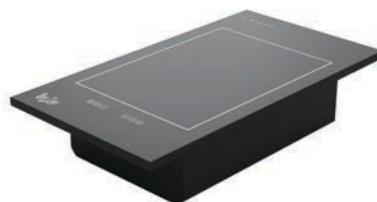
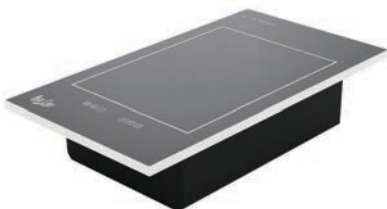
1800W, 120V

NX-14-DI-S

Silver Aluminum Edge

NX-14-DI-B

Black Aluminum Edge



RADIANT HEAT TOP - QUARTER SIZE

17.75" x 31.5" x 7"

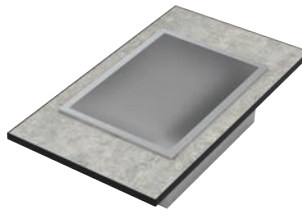
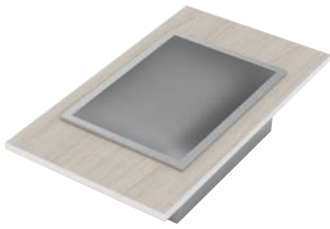
1000W, 120V

NX-14-R-S

Silver Aluminum Edge

NX-14-R-B

Black Aluminum Edge



ICE STATION - QUARTER SIZE

17.75" x 31.5"

Drain Assembly

NX-14-IS-S-O

Silver Anodized Frame
with Oak Laminate

NX-14-IS-B-C

Black Anodized Frame
with Concrete Laminate



CORNER SIDE TABLE - EXPOSED SHELVES

31.5" x 31.5" x 33.5"

NX-1-CR-S-O

Silver Anodized Frame
with Oak Laminate

NX-1-CR-B-C

Black Anodized Frame
with Concrete Laminate



CORNER SIDE TABLE - ENCLOSED SHELVES

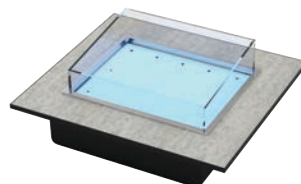
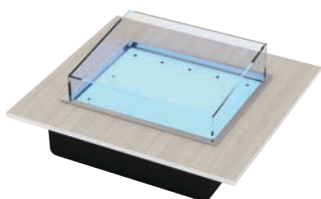
31.5" x 31.5" x 33.5"

NX-2-CR-S-O

Silver Anodized Frame
with Oak Laminate

NX-2-CR-B-C

Black Anodized Frame
with Concrete Laminate



SEAFOOD DISPLAY - HALF SIZE

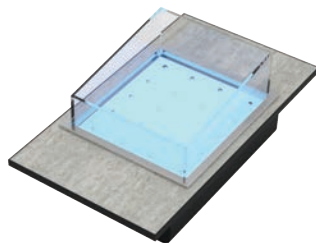
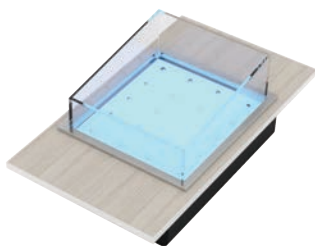
35.5" x 31.5"

NX-12-SD-S-O

Silver Anodized Frame
with Oak Laminate

NX-12-SD-B-C

Black Anodized Frame
with Concrete Laminate



**SEAFOOD DISPLAY -
QUARTER SIZE**

17.75" x 31.5"

NX-14-SD-S-O

Silver Anodized Frame
with Oak Laminate

NX-14-SD-B-C

Black Anodized Frame
with Concrete Laminate



BARTOP

70.75" x 8" x 8"

NX-1-BAR-S-O

Silver Anodized Frame
with Oak Laminate

NX-1-BAR-B-C

Black Anodized Frame
with Concrete Laminate



BACKBAR KIT

Frame: 63" x 19.75" x 71"
3 Glass Shelves Included:
63" L x 11 1/8" W x 1" H

NX-BB-S

Silver Anodized Frame

NX-BB-B

Black Anodized Frame



Pictured Left:

MODULE TRANSPORT CART

37.5" x 37.5" x 74"

NX-MT

Can Carry 6-10 Modules

Pictured Right:

FRAME TRANSPORT CART

51.25" x 37.5" x 80.75"

NX-FT

Can Carry 6-10 Modules



NEXUS COCKTAIL TABLES Our innovative new cocktail tables are designed to bring a touch of modern design and convenience to your next event. The pop-up design allows these tables to be easily set up and broken down, and multiple pieces can be nested together easily to save space during storage. These are perfect for outdoor gatherings, cocktail parties, and other special occasions. Available in multiple colors and finishes.



ROUND COCKTAIL TABLE

30" DIA x 42" H

NX-RCT-3042-B-C

Black Frame and Concrete Laminate Top;
Space-saving Triangle Base



ROUND COCKTAIL TABLE

30" DIA x 42" H

NX-RCT-3042-S-O

Silver Frame and Oak Laminate Top;
Space-saving Triangle Base



ROUND COCKTAIL TABLE

30" DIA x 42" H

NX-RCT-3042-B-M

Black Frame and Marble Laminate Top;
Space-saving Triangle Base



ROUND COCKTAIL TABLE

30" DIA x 42" H

NX-RCT-3042-S-B

Silver Frame and Black Laminate Top;
Space-saving Triangle Base



THE NEXUS: GO COLLECTION: COMING FALL 2023 Our brand new Nexus: Go System is completely customizable - choose from a wide selection of drop-in display components to build the perfect grab and go display unit. The lightweight frames are fully collapsible for ease of transport and storage. Available in multiple finishes.



MOBILE, COLLAPSIBLE FRAME
Frames collapse for easy transport



MODULAR, DROP-IN SOLID SHELVES
Easily add a variety of display shelves



DROP-IN WIRE DISPLAY RACKS
Incorporate for a dynamic look



INTEGRATED ELECTRICAL OUTLETS
Keep messy wires out of sight

NXGO-1-S	NEXUS GO, COLLISBLE FRAME, BRUSH FINISH S/S, 48" X 18" X 72", 4" CASTERS, INTEGRATED ELECTRIC, 120V	FRAME - SILVER
NXGO-1-B	NEXUS GO, COLLISBLE FRAME, MATTE BLACK PVD, S/S, 48" X 18" X 72", 4" CASTERS, INTEGR ELECTRIC, 120V	FRAME - BLACK
NXGO-CS-TAN	NEXUS GO, CLOTH SCREEN, 15" X 70", TAN	CLOTH SCREEN TAN
NXGO-CS-BLK	NEXUS GO, CLOTH SCREEN, 15" X 70", BLACK	CLOTH SCREEN BLACK
NXGO-HBB	NEXUS GO, HANGING BLACK BOARD, 37" X 11.5"	BLACK BOARD
NXGO-WB	NEXUS GO, S/S ANGLED WIRE BASKET, 48" X 16.5"	ANGLE WIRE BASKET
NXGO-TRAY-O	NEXUS GO, OAK TRAY, 17.25" X 14.75" X 4"	OAK TRAY
NXGO-TRAY-BW	NEXUS GO, BLACK WALNUT TRAY, 17.25" X 14.75" X 4"	BLACK WALNUT TRAY
NXGO-RB	NEXUS GO, S/S RETENTION BAR, 46.5" X 18" X 1"	RETENTION BAR
NXGO-HB	NEXUS GO, S/S HANGING BAR/WARDROBE ROD, 46.5" X 18" X 1"	WARDROBE ROD
NXGO-TBP-S-O	NEXUS GO, TOP/BOTTOM PANEL, 48" x 16.5" x 1", SILVER FRAME, OAK LAMINATE	TOP/BOTTOM SILVER/OAK
NXGO-TBP-B-C	NEXUS GO, TOP/BOTTOM PANEL, 48" x 16.5" x 1", BLACK FRAME, CONCRETE LAMINATE	TOP/BOTTOM BLACK/CONCRETE
NXGO-SHELF-S-O	NEXUS GO, MIDDLE SHELF, 48" x 16.5" x 1", SILVER FRAME, OAK LAMINATE	SHELF SILVER/OAK
NXGO-SHELF-B-C	NEXUS GO, MIDDLE SHELF, 48" x 16.5" x 1", BLACK FRAME, CONCRETE LAMINATE	SHELF BLACK/CONCRETE
NXGO-TL	NEXUS GO, TRACK LIGHT, BATTERY OPERATED LED, 2.25"	TRACK LIGHT
NXGO-CART-1	NEXUS GO, FRAME TRANSPORT CART, 70" x 33.5" x 78" (FITS 2 FRAMES, 4 TBP & 12 SHELVES)	CART

